

INFINITY

Media Recording

- Multichannel logging with circular buffer
- Tuner control
- IP stream recording
- EPG based programming
- Interpretation module with pattern recognition



General Description

Our Infinity solution is a professionally designed legal recording and documentation system.

The modular design of HMS Infinity allows flexible recordings and offers extensive analysis of audio and video signals with individual encoding parameters. It supports web streams and is able to tune digital and analog radio and television channels.

Planning & Scheduling

The Infinity Job Management module is our user interface for all recording tasks. New tasks are automatically forwarded to free recording lines.

Besides that, recordings can be triggered by external software or optionally be done by EPG data if DVB receiving hardware is used. Because of its database interface, the Job Management is perfectly suited for strategic planning as well as operational control.

Recording

The Infinity recording modules have been designed for simultaneous recordings of multiple audio and video channels on a single machine. Each channel can be recorded in low and high resolutions with individual bit rates.

For long-time recordings, an integrated circular buffer controls the media management based on the capacity of the storage. Infinity recording modules can even control analog or digital tuners.

Interpretation

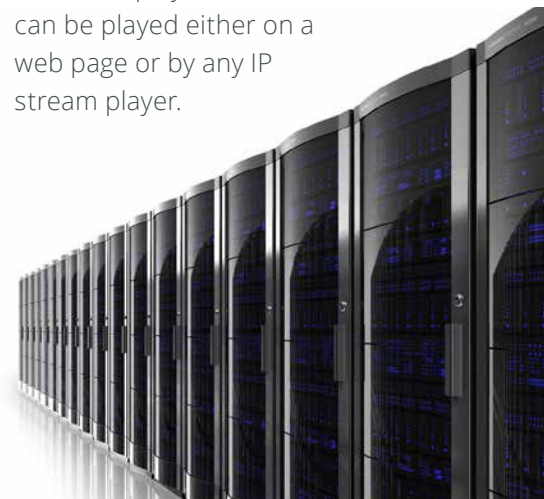
The Infinity audio and video analysis module manages daily duties covering all kinds of jobs from interpretation and analysis of the recorded data to cutting and exporting for further use.

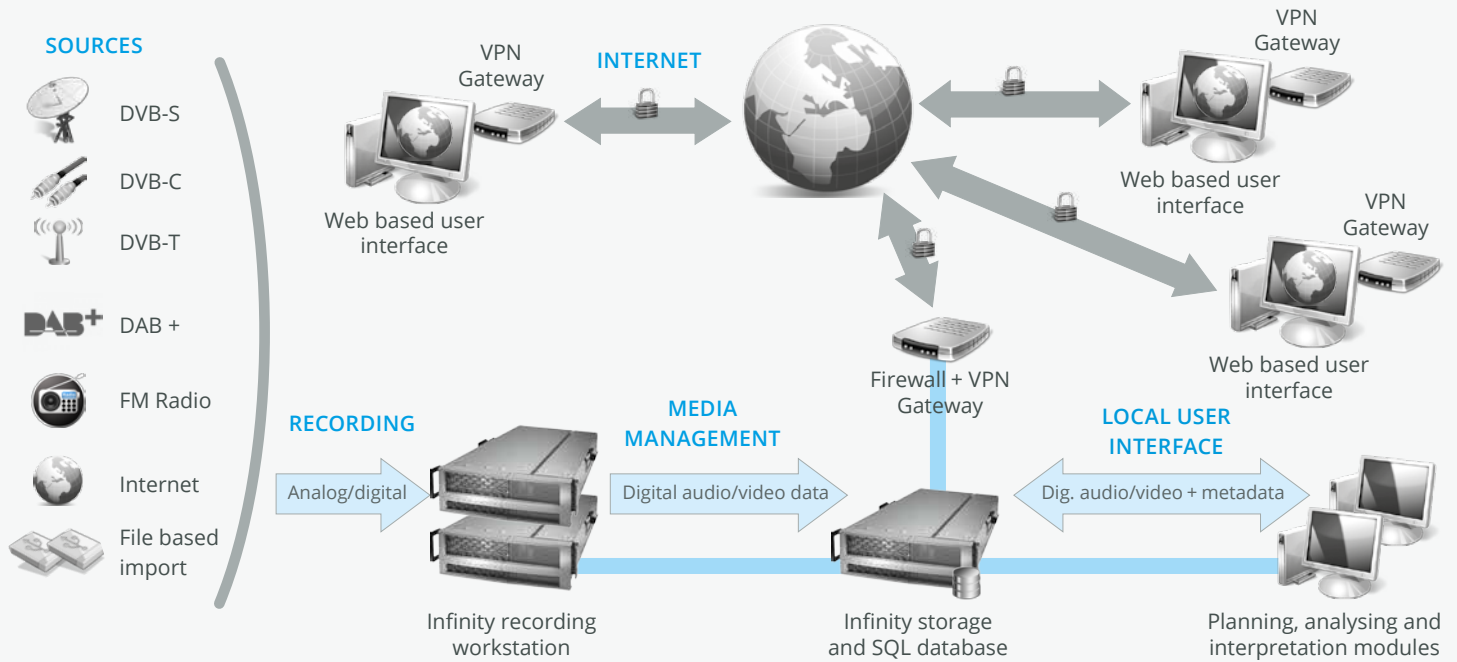
The system features easy navigation within the material as well as extensive tools for coding the data according to application specific requirements.

For the analysis of the recorded web radio streams or traditional radio and television programs you can use our automatic spot recognition. By connecting an advertising disposition system it can be used to evaluate broadcasted commercial clips.

Web Interface

All recorded audio and video IP streams can optionally be added to our convenient web frontend that allows you to easily create and manage individual playlists. The streams can be played either on a web page or by any IP stream player.





Audio / Video Recording Modules

- Continuous recording of any length within a circular buffer
- Time-controlled automated recording parameters (format, bit rate, recording time et al.) adjustable per channel
- Concurrent low and high resolution recording
- Date and time printed as overlay in video
- **Video input sources:** CVBS, YCbCr, SD/HD-SDI, DVB-C/-S/-T, DVB compliant MPEG TS, IP stream
- **Audio input sources:** Analog, AES/EBU, SDI embedded, DVB compliant MPEG TS | DAB+ | IP stream | FM Radio
- **Supported video standards:** SD (PAL / NTSC) and HD (720p, 1080i, 1080p)
- **Sample rates:** 22,05 kHz, 32 kHz, 44,1 kHz, 48 kHz
- **Video bit rates:** 48 kbps up to 15 Mbps
- **Audio bit rates:** 32 kbps up to 384kbps
- **Video compression:** H.264/AVC | MPEG-2 | DV25 | DVCPro25
- **Audio compression:** aacPlus | MPEG-1L2/3 | WAV | RF64

Key Features

- Multichannel audio and video logging
- Simultaneous low and high resolution recordings at multiple bitrates
- IP stream recording
- Tuner control (DAB+, DVB-C/-S/-T, FM radio)
- EPG based programming
- Time-controlled recordings or long-time recordings with circular buffer
- Date/time branding in video
- Interpretation module with pattern recognition
- Export of video data with subtitles
- Bookmark audio and video data for retrieving and analyzing

Interpretation Module

- Seamless playback of coded audio and video data
- Time shifted playback of files currently being recorded
- Convenient and easy to use playback tools: play, fast forward, variable slide show, random access without time delay
- Display of RDS data in relationship to audio data (with integrated RDS module only)
- Export of encoded data to SPSS, CVS, HTML, EXCEL, ASCII
- Visualization / editing of encoded sections
- Digital audio and video data export
- Dual screen analysis mode (e. g. full screen on second display)
- Export of video data with subtitles for DVD authoring (date, time, program station)

Job Management

- Adjustable job timing (continuously, daily, weekly)
- Tuning, adjustment of audio and video quality, file size, transmitter chain, receiver etc.
- Management of unlimited recording lines with up to 3 audio or video channels per line
- Automatic or manual distribution of segments to free recording channels
- Plausibility check of all parameters
- Recordings in a circular buffer
- Convenient job and segment management (clearing, shifting and others)
- Job generation with external data (analog, digital), e.g. digitizing of audio or video tapes
- EPG based programming of jobs
- Record times of delayed programs are automatically adjusted

